

## 75 to 240W, 24V Output DIN Rail Mount Power Supplies



- ◆ Low Cost
- ◆ UL508 Listed
- ◆ Convection Cooled
- ◆ Conforms to EN61000-3-2 (PFC)
- ◆ Conducted and Radiated EMI, Class B
- ◆ Input Transient Protection, IEC61000-4
- ◆ NEC Class 2 Compliant (DLP75 & 100 only)
- ◆ Semi F47 Compliant (DLP180 & 240 only)
- ◆ Lead Free

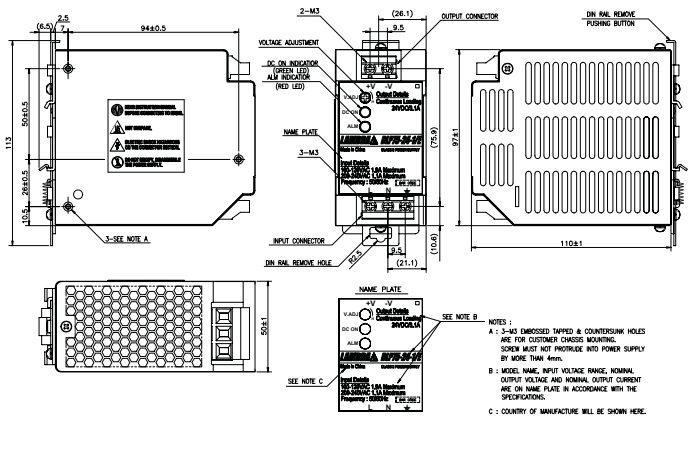
Specifications		MODELS	DLP75-24-1/E	DLP100-24-1/E	DLP120-24-1/E	DLP180-24-1/E	DLP240-24-1/E
ITEMS							
Output Voltage	V	24	24	24	24	24	24
Output Current	A	3.1	4.1	5.0	7.5	10	10
Output Power	W	75	98.4	120	180	240	240
Output Voltage Adjustment	V	21.6 - 28					
Load Regulation	-	192mV					
Line Regulation	-	120mV					
Total Regulation	-	<±5%					
Ripple/Noise (0-60°C)	mV	240					
AC Input Voltage & Frequency	-	85-132/170-265VAC, 47-63Hz Auto select				85-265VAC (47-63Hz) or 120-370VDC	
Input Current 100/230VAC	A	1.7/0.8	2.3/1.2	2.4/1.3	2.3/1.0	3.0/1.3	3.0/1.3
Efficiency 100/230VAC	%	82/83	83/85	83/85	84/87	82/86	82/86
Power Factor	-	Meets EN61000-3-2 (DLP180, 240: >0.95)					
Inrush Current(Typ)100/230VAC	A	20/45					
Leakage Current	mA	Less than 0.75mA					
Hold-up Time 100/230VAC	ms	20/30 (Semi F47 Compliance, DLP 180 & 240 only)					
Overcurrent Protection	-	>105%,Fold Back	>105%, Constant Current				
Overvoltage Protection	-	30-35V, latching, cycle AC line to reset					
LED Indicators	-	Green LED = DC ok Red LED = overcurrent					
Operating Temperature (2)	-	-10°C to 60°C, derate linearly to 60% load from 50 to 60°C					
Storage Temperature	-	-30°C~+85°C					
Humidity (Non-Condensing)	%RH	30-90% operating 10-95% non operating					
Cooling	-	Convection cooling					
Withstand Voltage	-	Input - Ground 2kVAC, Input to Output 3kVAC, Output - Ground 500VAC					
Vibration	-	9.8m/s <sup>2</sup> (1.0G) at DIN rail; (10-55Hz: 9.8m/s <sup>2</sup> Constant, X,Y, Z each 1 hour)					
Shock	-	196m/s <sup>2</sup> (20G)					
Safety Agency Approvals	-	UL508 (Class 2 DLP75 & 100), UL60950, CSA60950, EN60950, CE, EN50178 Cat III (Pri)					
Conducted EMI	-	FCC-B, EN55011/EN55022-B, VCCI-B; Meets IEC61000-4-1					
Radiated EMI	-	EN55011/EN55022-B, FCC-Class B, VCCI-B					
ESD	-	IEC61000-4-2 ±10kV (Air), ±5kV (Contact)					
Radiated RFI	-	IEC61000-4-3 80-1000MHz,12V/m 80% AM 1kHz					
Fast Transient Burst	-	IEC61000-4-4 2.4kV 5kHz					
Lightning Surge	-	IEC61000-4-5 4.4kV, 1.2x50µs (Common Mode) 2.4kV 1.2x50µs (Normal)					
Conducted RFI	-	IEC61000-4-6 150kHz-80MHz, 12V, 80% AM 1kHz					
Magnetic Field	-	IEC61000-4-8 36A/m					
Voltage Dips	-	IEC61000-4-11 70% 10ms, 40% 100ms, 0% 5s					
Size	mm	50 x 97 x 110	60 x 97 x 110	60 x 97 x 110	80 x 97 x 110	120 x 97 x 110	120 x 97 x 110
Weight	g	470	540	540	780	1000	1000
Warranty	-	3 Years					

(1) 100VAC/230VAC

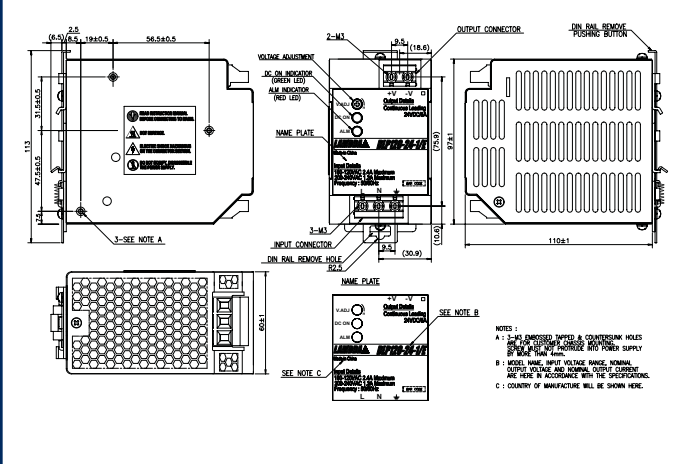
(2) DLP240-24-1/E, 170-265VAC: -10°C~+70°C, derated linearly to 60% load from 50° to 70°C.

# DLP Series

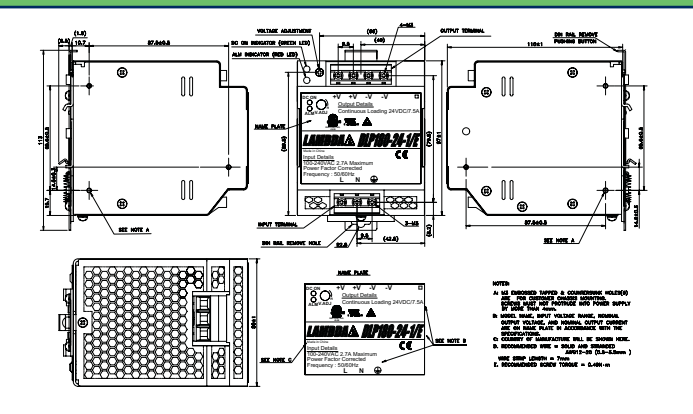
## DLP75 Outline



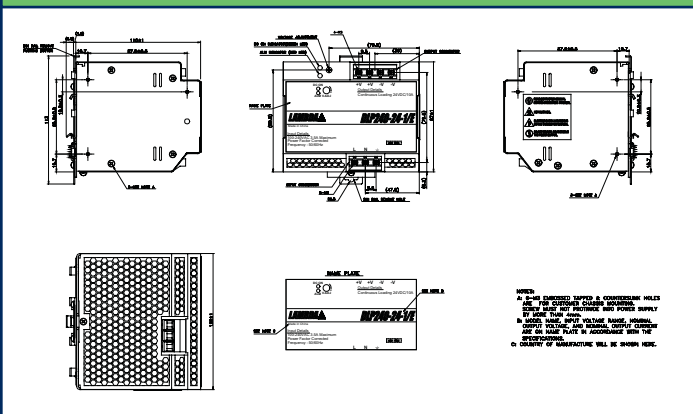
## DLP 100/120 Outline



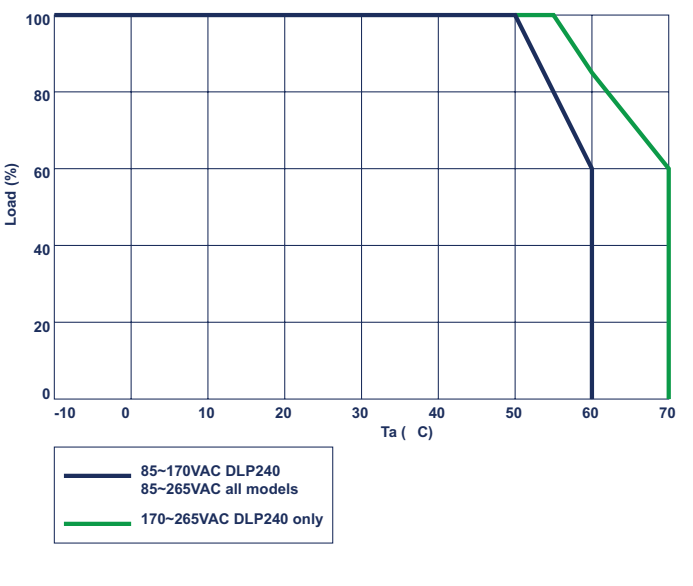
## DLP 180 Outline



## DLP 240 Outline



## Derating Curve



## Other Industrial Products

- RWS 15W & 30W Single Output
- JWS & JWT 50W & 600W Single & Triple Output
- JFS 500W & 2000W Single & Output
- DHP 500W & 1000W Single Output DIN Rail