

SDP SERIES



19" DC or AC Distribution Panel



The MCB Distribution Panel is a low cost enhancement to any rack mounted system using the SR Series or other products.

Centre divided, allowing segregation of AC and DC if required, the panel can accommodate a maximum of 20 standard single pole breakers, 10 double pole breakers, or 10 single pole breakers with indicating contacts.

MCBs used are standard 6kA B-curve to maximum 32A (ABB 251 series or equivalent).

Ratings available: 6A, 10A, 16A, 20A and 32A. Any combination of MCBs may be specified.

To allow easy fitting or removal of breakers, the front panel is detachable exposing the DIN rail and MCBs.

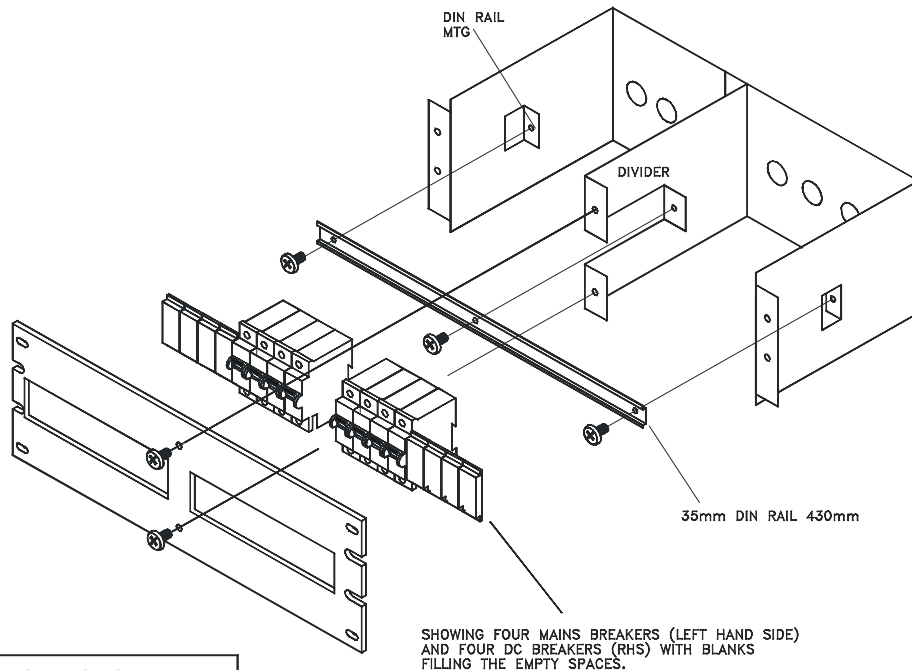
◆ 24 Month Warranty

SPECIFICATIONS

PHYSICAL

Physical:	The unit is 19" rack mounting and 3 rack Units in height (3U).
Unit Dimensions:	483mm W x 133mm H x 180mm D
Wiring:	The standard MCBs used accommodate stranded wire to 10mm ²
Other Items:	Digital meter (DC voltage and current) occupying 5 positions, Timers, RCDs. Transformers can all be mounted on the DIN rail if required.

EXPLODED VIEW



SNAPTEC AUSTRALIA
19" Distribution Panel

TITLE : 3U BREAKER BIN - ASSEMBLY DETAIL	ISSUE: 1	DRAWN : THOM	REVISION HISTORY:
FILE : BIN-ASSY.SKD	REVISIO 0	APPROVED :	
SHEET 1 of 1	DATE : 09-12-98		