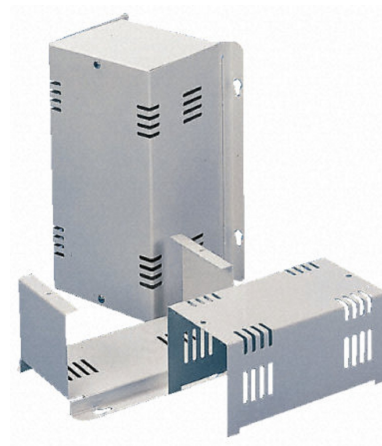


- Zinc plated solid steel case
- Chassis mount / Wall mount
- Two piece design
- Available in 6 sizes
- Ventilated case
- Raised bottom plate with side flanges



Model Selection Table

Model Number	Description
SA-PSE-1	Enclosure steel zinc coated, white color, dimensions: 180x89x80mm Chassis mount
SA-PSE-2	Enclosure steel zinc coated, white color, dimensions: 200x123x92mm Chassis mount
SA-PSE-3	Enclosure steel zinc coated, white color, dimensions: 257x130x112mm Chassis mount
SA-PSE-4	Enclosure steel zinc coated, white color, dimensions: 367x146x115mm Chassis mount
SA-PSE-5	Enclosure steel zinc coated, white color, dimensions: 298x148x115mm Chassis mount
SA-PSE-6	Enclosure steel zinc coated, white color, dimensions: 500x180x130mm Chassis mount

Description

The PSE series of power supply enclosures is a range of ventilated zinc plated steel enclosures painted in white color. The PSE series can be used to provide a chassis mount enclosed case for different types of power converters. The two piece design of the case make fitting and assembly of various power converters simple with minimum obstruction. Available in six sizes these enclosures can be used in numerous applications such as ac/dc power supplies , dc/dc converters , ac/ac transformers .