

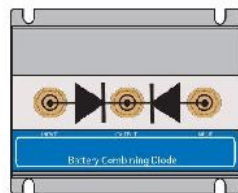
DBC series Oring Diode Packages



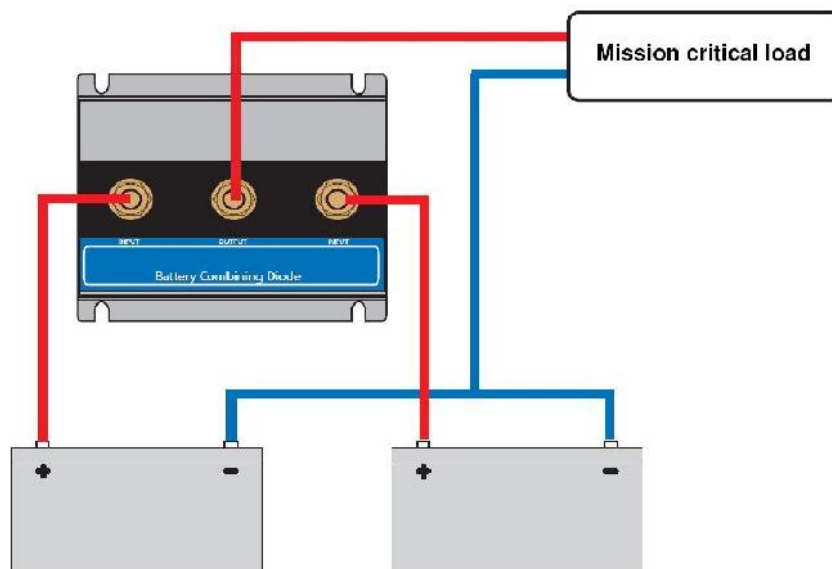
Diode battery combiners are used to guarantee continuous DC power to mission critical equipment, such as an electronic engine control system. With a diode battery combiner two or more DC power sources can be used in parallel to supply the mission critical load. Failure of one source will not interrupt power to the critical load.

The DBC series battery combiners feature a low voltage drop by use of Schottky diodes: at low current the voltage drop is approximately 0,3 V and at the rated output approximately 0,45 V.

DBC Diode Battery Combiner	DBC402	DBC802
Maximum continuous current (A)	40	80
Number of batteries	2	2
Connection	M6 bolts	M6 bolts

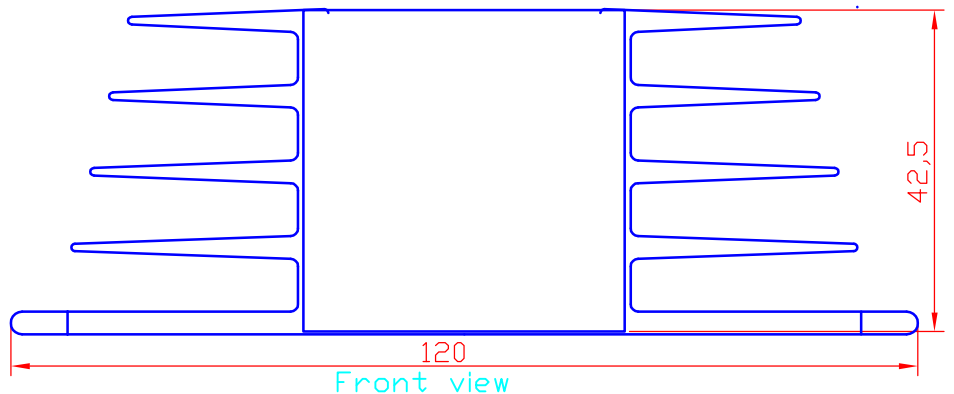
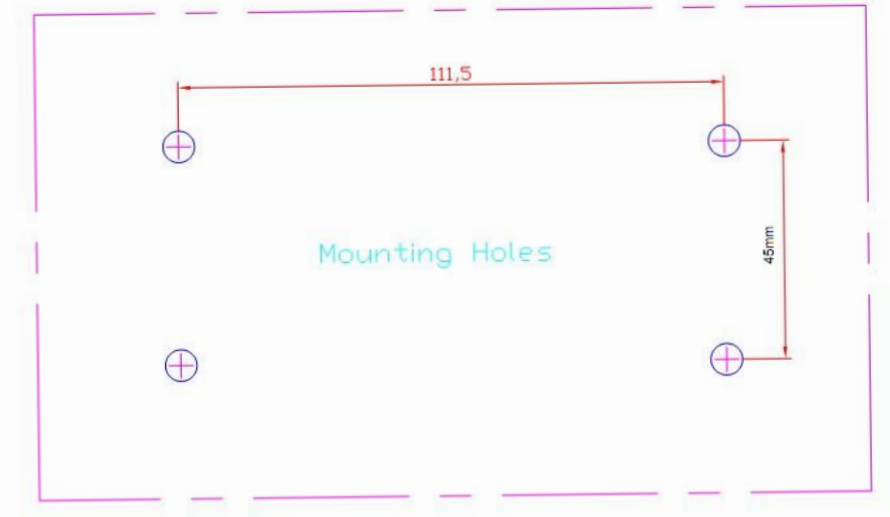
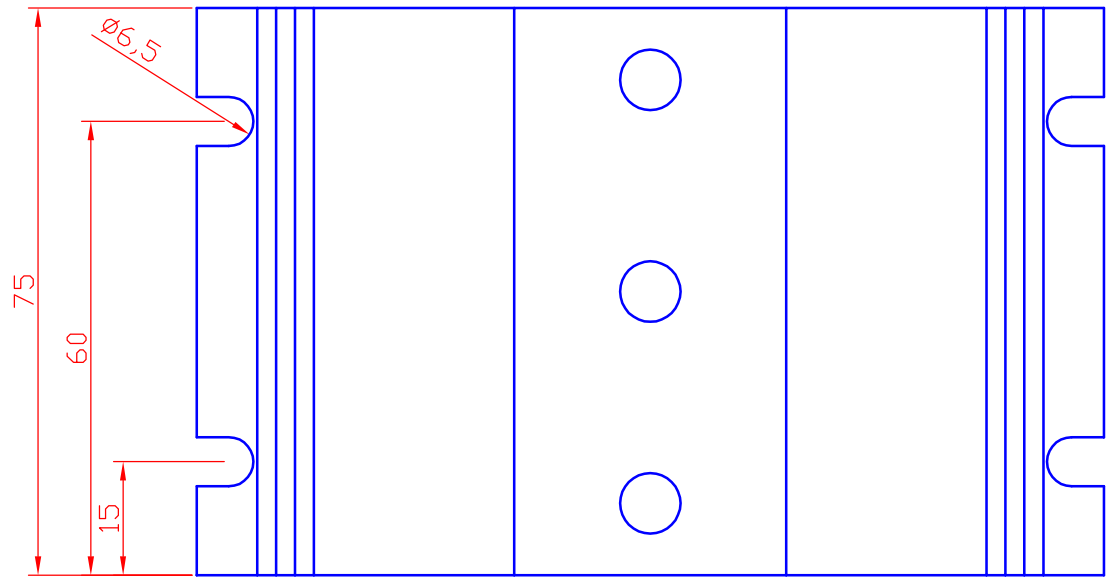


Circuit diagram



System with two batteries

Rev.	Description	Date	By	Check
00	First design	06-Apr-12	LH	---



01			---
Itemno.	Quantity	Description	Article No./Reference
Title: SNAPTEC ORING DIODE PACKAGE 40A 80A			 USA projection
Drawing:			
 www.snaptec.com.au		Remarks: Tolerance ISO 2768 class m unless stated otherwise All dimensions in mm	Size: A3 Scale: 1:1 Sheet: 1/1 Rev.: 00